

Farm Info:

20km East of Eltham

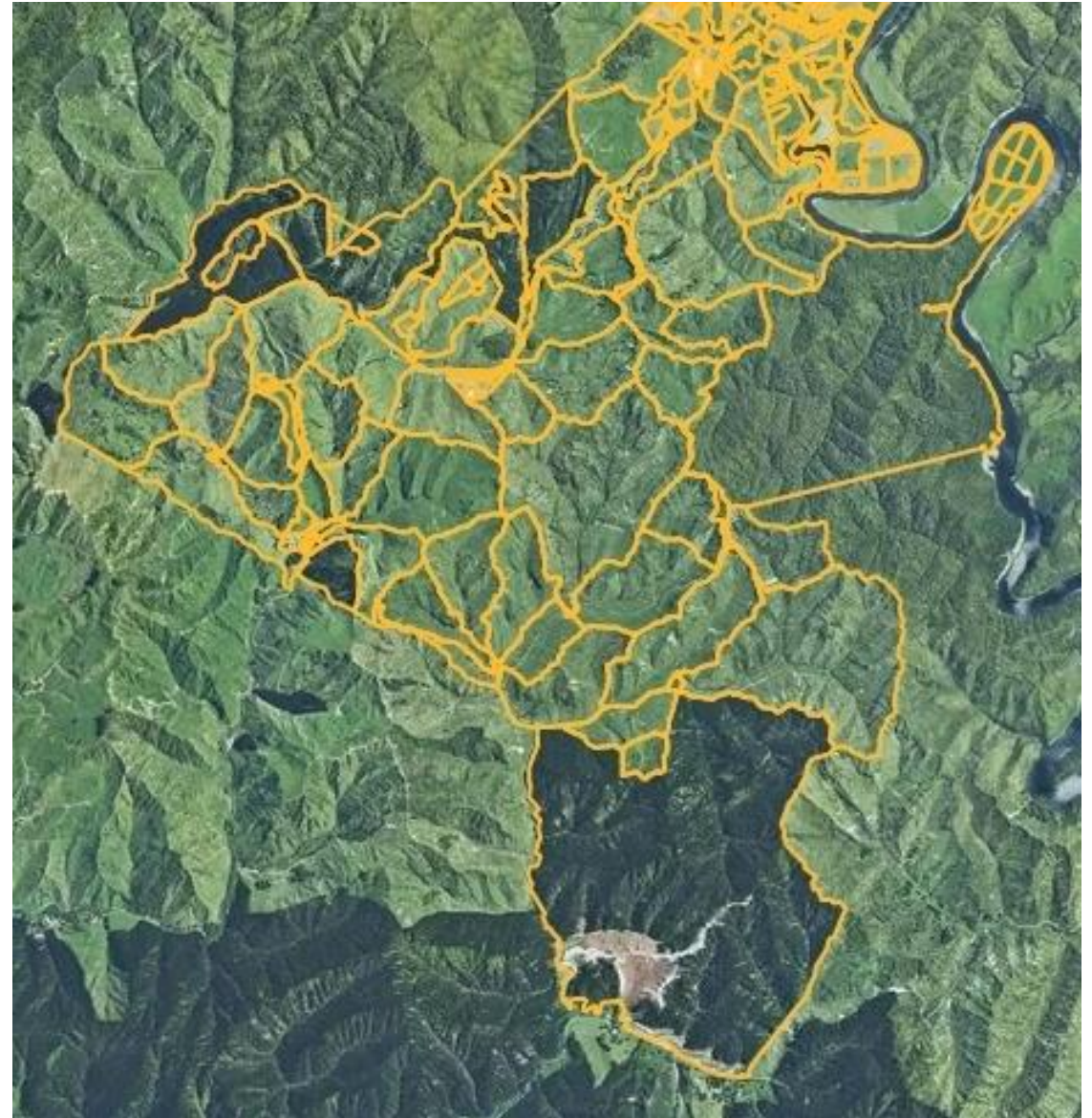
2000ha - 400ha Forestry

240ha in first rotation (completing harvest)

60ha in third rotation

Forestry Contributes \$250-\$300 GM/ha to farm annualised ex expenses.

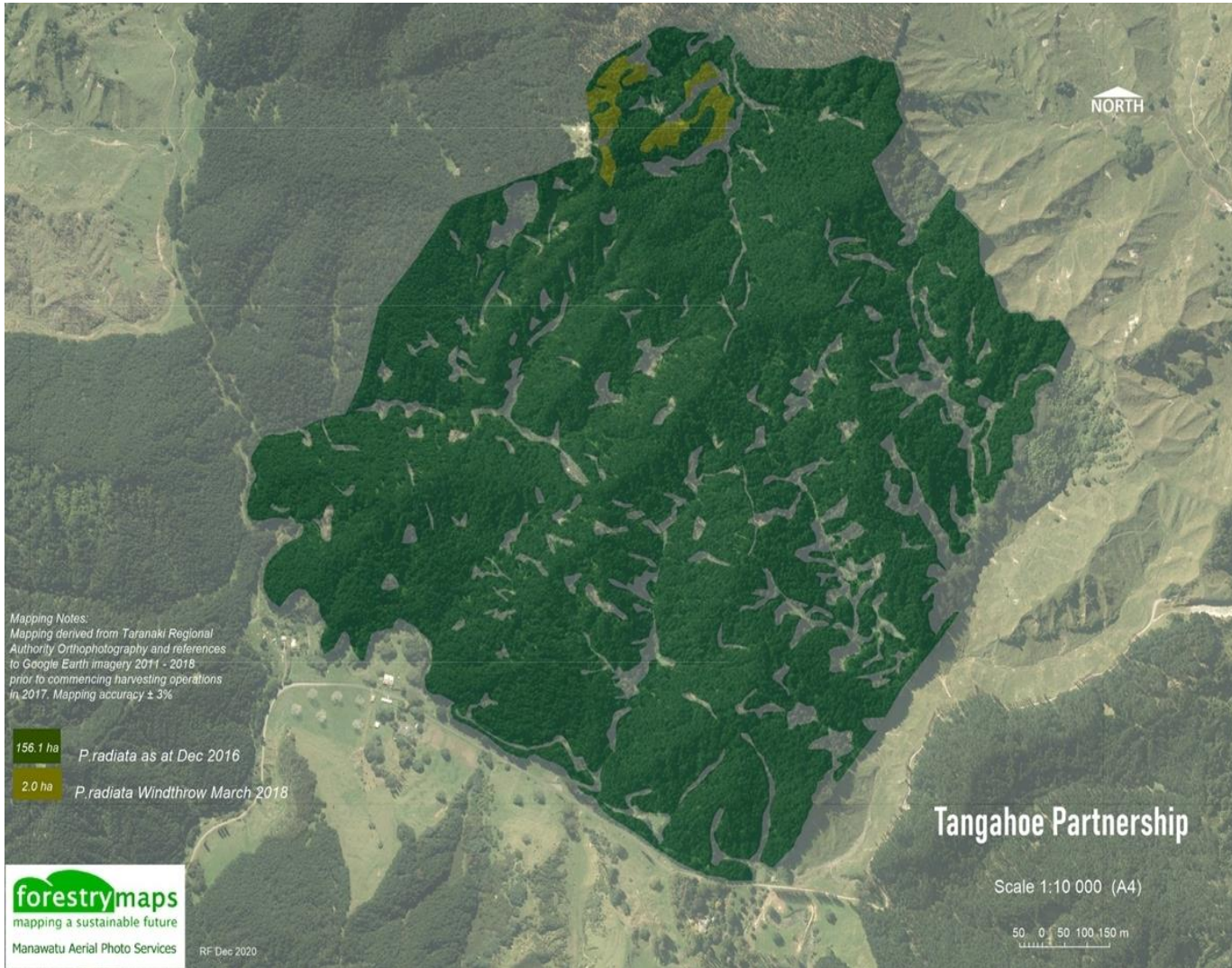
Succession



Recent Harvest



Recent Harvest



Was it a good experience?

- 420 t/ ha realised – 570 t/ ha projected
- Planted at 600 Stems/ha, windthrow etc
- Positive reports- \$60/tonne vs \$50/tonne Budget

BUT

- Roading not included in reports
- Actual area and yeild not projected correctly

Result

- \$500k less than expected
- What is its value as cut-over land?

Should I plant the Palace?

- 100ha steep hill country
- 550 Single Ewes @ 90% lambing= 495 lbs @ \$70-90/hd = \$34-\$44.5k
- 50 Steers, R2- R3 = \$1000-\$1600= 50 @ \$400-\$600/hd = \$20k- \$30k
- Manuka Honey= 50 hives = \$15-\$30k
- GM of \$70k-\$105k= \$1.8m-\$2.7m over 26 years

Vs

Forestry + Carbon????

